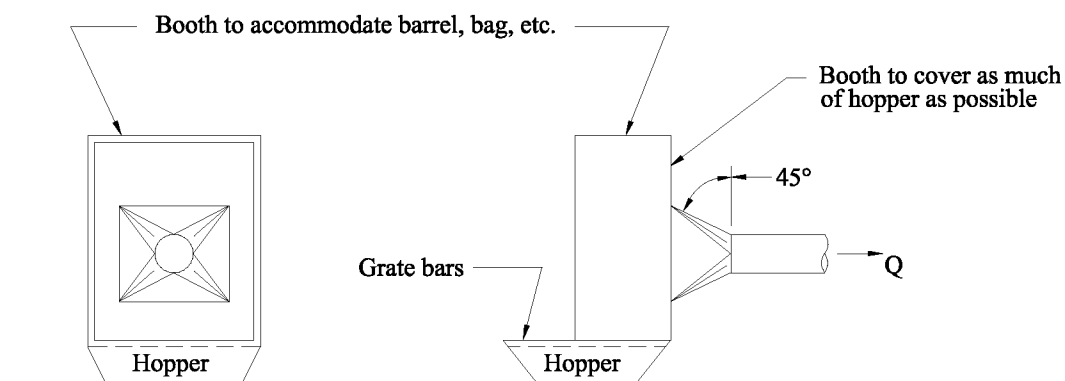


MECHANICAL LOADING

Belt speed		Flowrate
Less than 200 fpm	----	350 cfm/ft of belt width, Not less than 150 cfm/ft of opening.
Over 200 fpm	----	500 cfm/ft of belt width, Not less than 200 cfm/ft of opening.



Minimum duct velocity = 3500 fpm
 $Q = 150 \text{ cfm/ft}^2$ face
 $h_e = 0.25 VP_d$

MANUAL LOADING



TITLE

**BIN & HOPPER
VENTILATION**

FIGURE

VS-50-10

DATE

1-91